



DEPARTMENT OF MAIN ROADS
NEW SOUTH WALES

ROADS
2000

Kiama Bypass



Building a Better Road System

New South Wales Road Improvement

The opening of Kiama Bypass marks the completion of a major improvement to the Princes Highway.

At a cost of \$27 million, this is one of the largest projects ever undertaken on this important route. It will bring considerable benefits to both travellers to the South Coast and residents of Kiama.

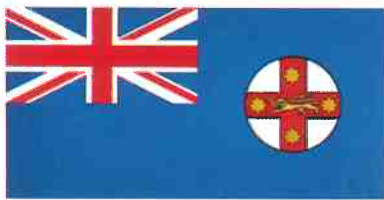
Through traffic will no longer have to contend with congestion at this popular resort, particularly the long delays previously experienced during peak holiday periods.

At the same time residents will benefit from the diversion of through traffic away from local streets and visitors will be able to enjoy the attractions of Kiama without the dangers and distractions of large volumes of through traffic.

As a major component of the Roads 2000 plan for the Wollongong Region, this project reflects the Government's commitment to providing better roads in each and every region of New South Wales.

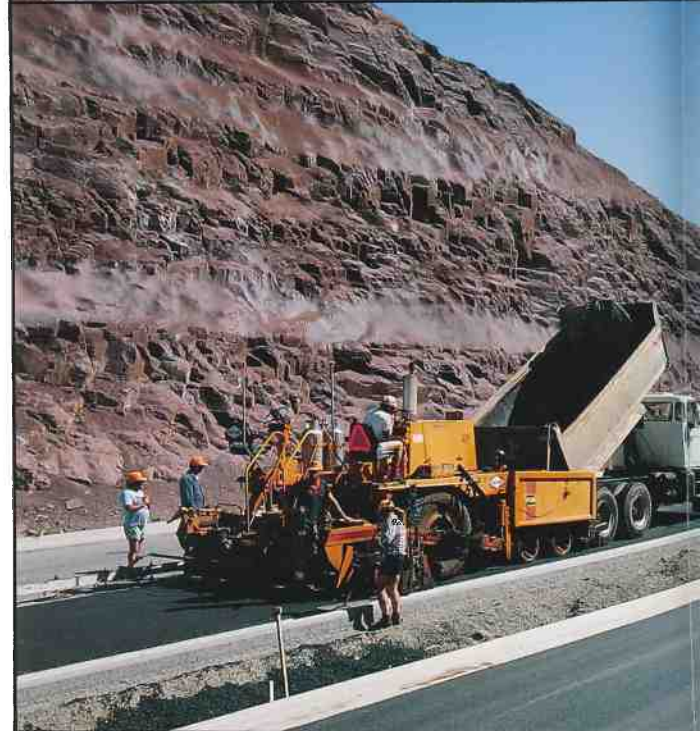
Funded by both the State and Federal Governments, Kiama Bypass is an important contribution to more efficient, safer travel on New South Wales roads.

December 1987

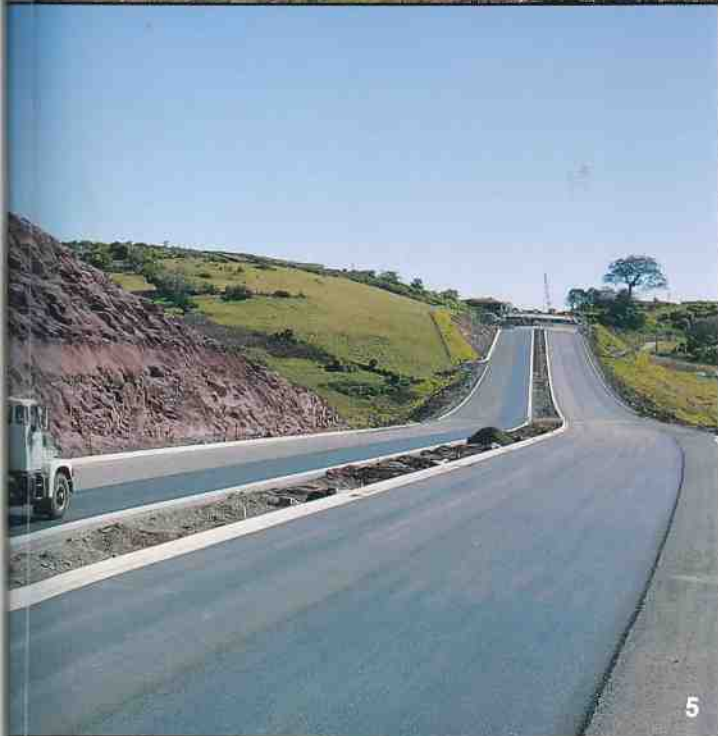


Front Cover: *Looking north over Weir Street Interchange.*

1. *Earthworks in February 1985.*
2. *Aerial view looking south in October 1986.*
3. *Construction of Spring Creek Bridge.*
4. *A view of Saddleback Mountain Road overbridge.*
5. *Laying asphalt north of Saddleback Mountain Road.*



ment Programme — Kiama Bypass



Kiama Bypass runs for 5.3 km from the Princes Highway north of Kiama near Spring Creek to the Princes Highway south of Saddleback Mountain Road.

It bypasses the commercial area of Kiama and residential development at Kiama Heights.

The project included five bridges: three dual carriageway structures to carry the bypass over Spring Creek, Terralong Street and Bland Street; and two single carriageway structures to carry Saddleback Mountain Road and Weir Street over the bypass.

Road design was carried out by the Department of Main Roads and bridges were designed by the Department and consultants, to provide a high level of service through steep terrain.

By separating through traffic from local traffic the bypass will provide vastly improved conditions for residents and visitors to this scenic and historic holiday resort.

The Department is landscaping the project by planting some 9000 trees and shrubs, including acacias, banksias, casuarinas, eucalypts, grevilleas, melaleucas, Illawarra flame, red cedar and jacarandas. Kiama Municipal Council is assisting the Department by contributing trees for this project.

In addition, Council was provided with funds to widen Terralong Street and improve access for local traffic to and from the bypass.

Construction Details

Total Earthworks	500,000 cu m
Largest Cutting — Saddleback Mountain Road	109,000 cu m
Deepest Cut	21 m
Highest Fill	17 m
Largest Fill	104,000 cu m
Pavement Area	131,360 m ²
Landscaping	12 ha
Bridges — three dual carriageway bridges — two single carriageway bridges	
Culverts — two helical lock seam corrugated steel culverts — one multiplate corrugated steel arch providing access to a severed property and an historic cemetery.	

